

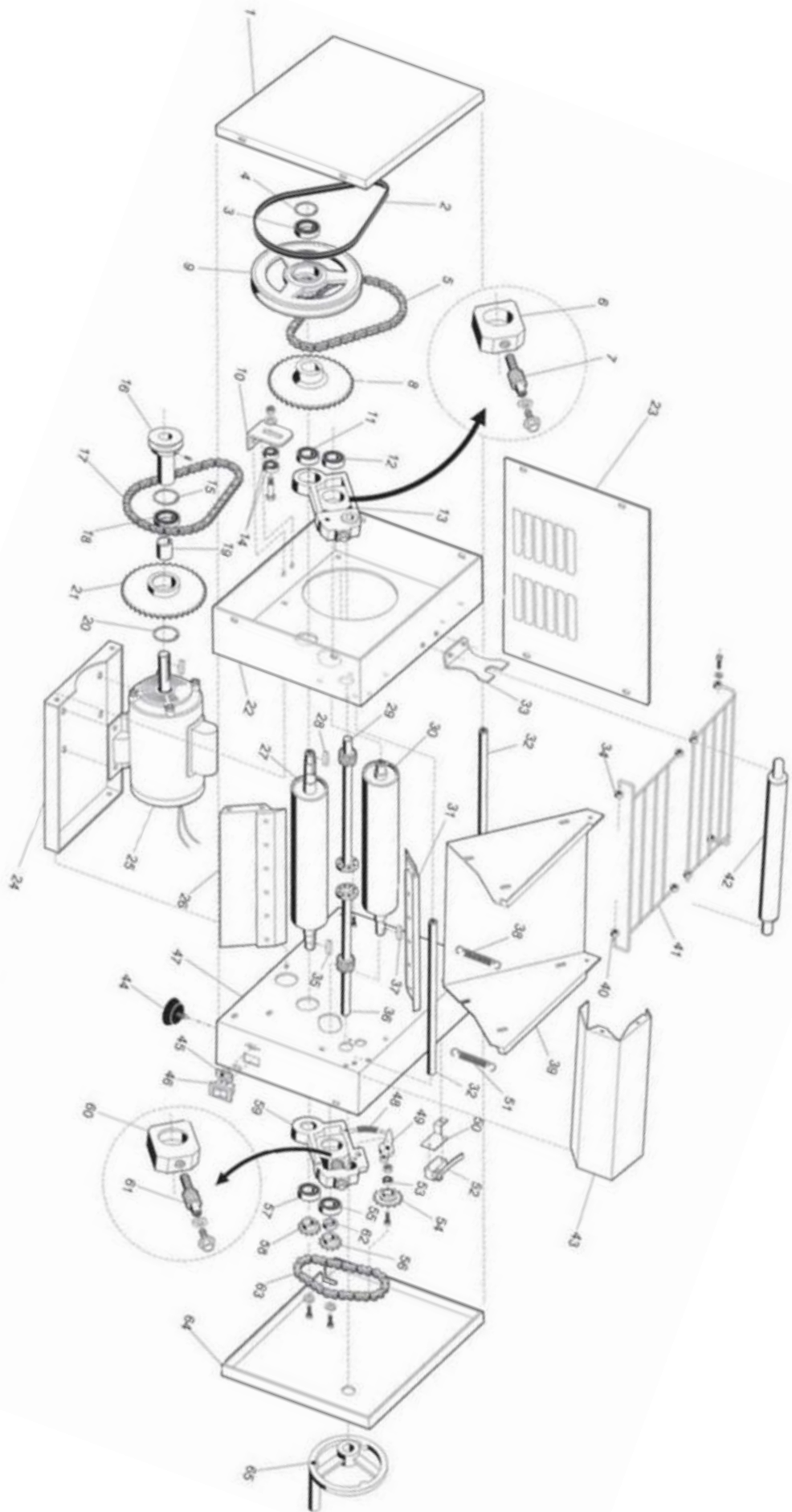


Product Manual



BMSPS12

Parts Breakdown



BMSPS12 Parts List

1	LH SIDE LID 400 X 301 MM	34	SHIELDED FRAME CASTER 8MM
2	Z-675 BELT	35	SQUARE KEY 06 X 06X12
3	ROLLER BEARING	36	SUPER RH SHAFT ASSEMBLY
4	SPRING RING	37	SQUARE KEY 06 X 06 X 12
5	CHAIN	38	SCRAPER SPRING 55 X 13 X1.5
6	LH MOVABLE BEARING	39	UPPER TRAY 736 X 296MM
7-	LH HELICOIDAL FUSE	40	SHIELDED FRAME CASTER 8MM
8	FLAT GEAR 40	41	SHIELDED FRAME PROTECTION
9	TRANSMISSION PULLEY ASSEMBLY	42	350 PVC ROLL ASSEMBLY
10	BELT STRETCHER	43	UPPER PROTECTION 330 X 222MM
11	ROLLER BEARING	44	RUBBER FEET
12	ROLLER BEARING	45	BIVOLT SWITCH KEY
13	LH SIDE BEARING	46	ON/OFF SWITCH KEY
14	ROLLER BEARING	47	RH SIDE ASSEMBLY
15	SPRING RING	48	CHAIN STRETCHER SPRING 46 X 14 X 2.25
16	MOTOR PULLEY	49	CHAIN STRETCHER
17	CHAIN	50	MICROSWITCH SUPPORT 73 X 30MM
18	ROLLER BEARING	51	SCRAPER SPRING 55 X 13 X 1.5
19	PULLEY SPACER	52	MICRO SWITCH KEY
20	SPRING RING E 20	59	ROLLER BEARING 6000 ZZ
21	GEAR ASSEMBLY	54	GEAR ASSEMBLY Z 16 CL
22	LH SIDE ASSEMBLY	55	ROLLER BEARING 6003 ZZ
23	REAR LID 342 X 260MM	56	TRANSMISSION GEAR F17 11 TEETH
24	MOTOR BASE 338 X 235MM	57	ROLLER BEARING 6204
25	MONOPHASE MOTOR 1/2 P4 11/22 60HZ	58	TRANSMISSION GEAR F18 11 TEETH 20MM
26	LOWER SCRAPER ASSEMBLY	59	RH LATERAL BEARING
27	LOWER CYLINDER ASSEMBLY	60	MACHINED RH MOVABLE BEARING
23	SQUARE KEY 06 X 06 X 20	61	RH HELICOIDAL FUSE
29	SUPER LH SHAFT ASSEMBLY	62	SPACER 17 X 11.5
30	UPPER CYLINDER ASSEMBLY	63	CHAIN 1/2X1/8
31	UPPER SCRAPER ASSEMBLY	64	RH LATERAL LID 400 X 301 MM
32	LATERAL FIXING ROD 305MM	65	CRANK ASSEMBLY
33	ROLLING PIN SUPPORT		